

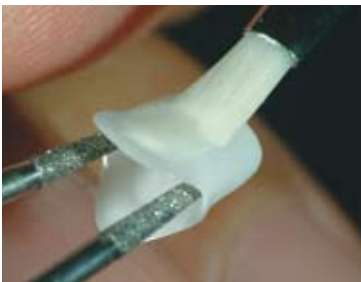


## The Aesthetic Element in Full-Ceramic Restorations

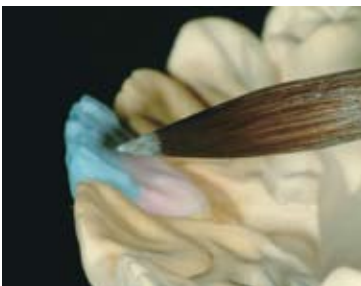
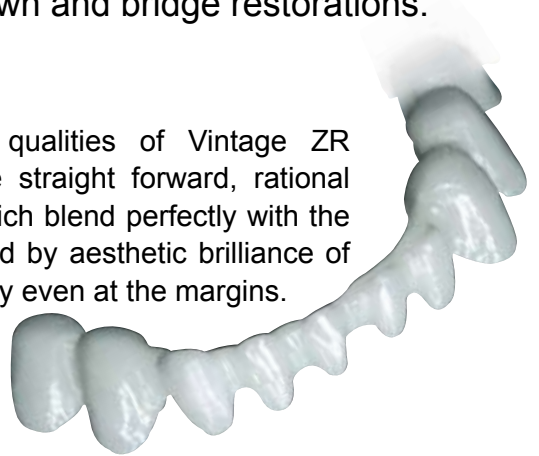




To meet the changing trends and aesthetic demands in porcelain technology **SHOFU** developed a new range of all ceramic veneering material that offers extensive application possibilities on popular alumina-core or zirconia-core materials to achieve stable and biocompatible crown and bridge restorations.



The unsurpassed handling qualities of Vintage ZR and Vintage AL facilitate the straight forward, rational fabrication of restorations, which blend perfectly with the natural dentition, characterised by aesthetic brilliance of colour and vibrant translucency even at the margins.



### **Micro-fine Particle Structure**

In addition to the material-specific advantages, the ceramic fillers have been specially designed for an efficient working technique. The particularly fine and homogeneous micro particle structure of the porcelain powders guarantee natural shade reproduction with a strong bond to achieve remarkable aesthetics even with extremely thin layers.



### **Optical Properties**

All the optical properties of natural teeth, such as light diffusion, opalescence and translucency can be reproduced with opalescent Vintage ZR and Vintage AL Incisal and Effect powders.

### **Precise Margins**

Specially created Cervical Trans powders have minimal firing shrinkage at the cervical area to ensure precise margins and long term success of the restorations. The increased translucency and added fluorescence provide a more life-like cervical area to enhance the overall aesthetics of the restoration.

## Benefits



### Reliability

- Simple and reliable application on all alumina / zirconia frameworks
- Feldspar based micro-ceramic with extraordinary strength
- Excellent bonding characteristics with high fusing Opaque Liner
- Stable CTE, even after several firings
- Less abrasion on opposing natural teeth



### Efficiency

- Predictable aesthetics with a simple two layer build-up technique
- Homogenous, dense surfaces with low firing shrinkage
- Remarkable handling characteristics
- Logically co-ordinated colour concept for both porcelain systems



### Versatility

- Highly fluorescent Margin and Cervical trans powders
- Opal incisal and effect colours to simulate true opalescence of natural teeth
- Corresponds to VITA\* classical shade system
- Additional whitening colours

\* VITA is a registered trademark of Vita Zahnfabrik, Bad Säckingen.

Shade	A20	A30	A3.50	A2B	A3B	A3.5B	OD-N	OD-A3	OD-RootA
Vintage AL									
Vintage ZR									
Shade	CT-CL	CT-A	MI	MIv	O	Red	Y	AC	ADD-ON B
Vintage AL									
Vintage ZR									
Shade	OPAL 58	OPAL 59	OPAL 60	OPAL T	OPAL SL	OPAL OC	OPAL AM-R	OPAL AM-Y	BT
Vintage AL									
Vintage ZR									

## Logically Co-ordinated Colours

The colour matching of Vintage AL components are identical to individual pastes and powders of Vintage ZR porcelain system. This logically co-ordinated colour system offers secure reproduction of desired tooth colour for all technical challenges.

## Technical Overview

Coefficient of thermal expansion – After several firings Vintage ZR / Vintage AL porcelain shows an even expansion and a secure bonding to the alumina / zirconia framework.

Zirconia Coping	Vintage ZR	Alumina Coping	Vintage AL	Vintage Halo
10.0 – 10.5	9.4	6.9	6.7	12.9

Thermal expansion modulus <25-500 °C> (  $\times 10^{-6}K^{-1}$  )



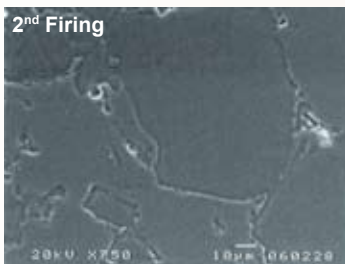


## – Enlivens all Zirconia Framework

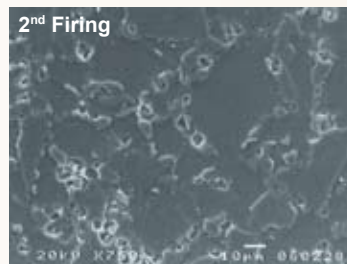
The Vintage ZR is a high fusing, feldspar based micro-ceramic veneering porcelain system that offers a comprehensive selection of unique shades that facilitate simple and efficient fabrication of life-like zirconia restorations with excellent colour harmonization to natural teeth.

### Vintage ZR offers...

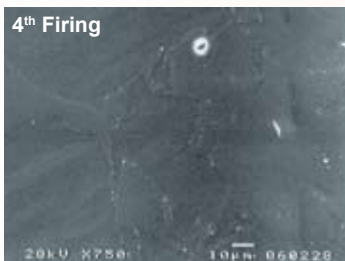
- Recommended for all Zirconia framework materials
- Feldspar based micro-ceramic with extraordinary high strength
- Excellent colour reproduction to match natural teeth
- Minimized wear on opposing teeth
- Easy application technique
- Extensive range of translucent, opalescent and effect shades
- Opaque Liner to mask non-vital teeth or metal framework
- Cervical translucent compounds with a lower melting temperature and higher fluorescence for aesthetic and biocompatible marginal areas



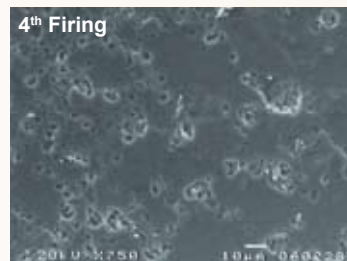
Glass-based zirconia veneer porcelain after 2<sup>nd</sup> firing.



Vintage ZR after 2<sup>nd</sup> firing.



Glass-based zirconia porcelains contain only limited crystalline structures and exhibit limited elasticity that can lead to facet-like chipping under intraoral load.



Even after four firings, Vintage ZR retains very fine particles of leucite crystals uniformly dispersed in the material. This structural feature guarantees fracture resistant restorations.

### Unique Features

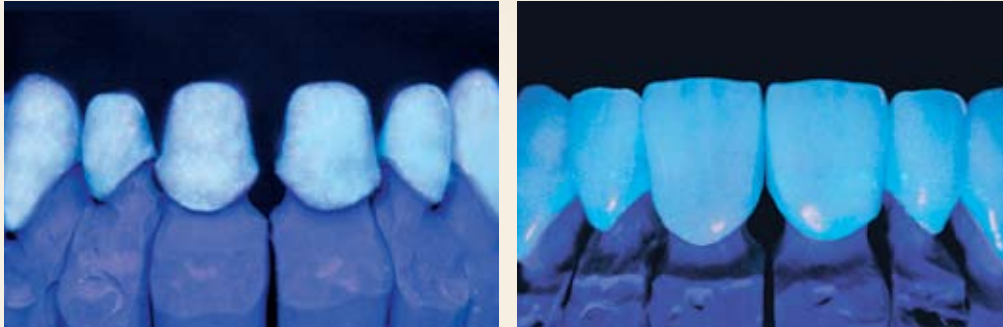
#### Resistance Against Cracking

Unique composition based on natural feldspar guarantees excellent bonding, strength and stability even after multiple firings. As illustrated, Vintage ZR retains very fine particles of uniformly dispersed leucite crystals even after the 4<sup>th</sup> firing to ensure high bond strength, durability and increased resistance against cracking.



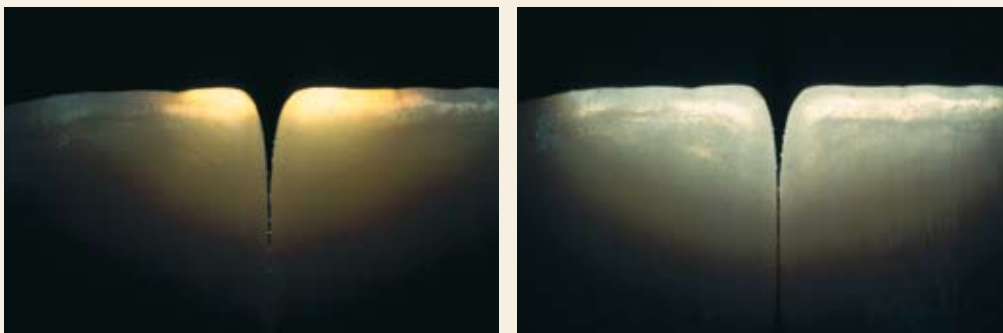
### Natural Fluorescence

The highly fluorescent Cervical and Marginal powders mimic the optical properties of natural teeth with a vital appearance. Application of these powders directly on the framework accentuates the natural colour brilliance.



### True Opalescence

The true opalescence of natural enamel can be easily reproduced with the Opal Incisal and Effect powders of Vintage ZR porcelain.



### Novel Opaque Liner

The exceptionally fine particle structure of the Opaque Liner enables a patient specific colouration of the frameworks, even with thin layers. This provides sufficient space for the following build-up.



VINTAGE  
**ZR**  
POWDER 15g  
ZR Bond Porcelain  
ZR Autbrennkeraamik  
Ceramique sur zirconium

A+B  
VINTAGE  
**ZR**  
POWDER 15g  
ZR Bond Porcelain  
ZR Autbrennkeraamik  
Ceramique sur zirconium

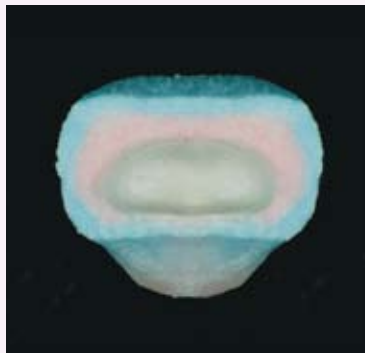


## – Individual Aesthetics for Alumina Frameworks

The Vintage AL porcelain system offers limitless characterizations to achieve individual aesthetics for a variety of aluminium oxide supported frameworks. The remarkable handling qualities of Vintage AL facilitate efficient fabrication of aesthetic restorations that match perfectly with natural teeth.

### *Vintage AL offers...*

- Recommended for all Aluminium Oxide framework materials
- Excellent colour reproduction to match natural teeth
- Non abrasive
- Easy and efficient handling
- Extensive range of translucent, opalescent and effect shades
- Opaque Liner to mask non-vital teeth to achieve an accurate base colour
- Cervical translucent compounds with a lower melting temperature and higher fluorescence for aesthetic and biocompatible marginal areas



Exceptional aesthetics and optical properties with a simple two-layer build-up technique.

### **Natural concept**

Vintage AL opalescent Incisal and Translucent powders simulate the optical properties of natural teeth.

Even with a simple two layer build-up technique using Body and Opalescent Incisal powders an exceptional natural brilliance and translucency can be achieved.



Vintage AL Margin powders, Opaque and Body powders guarantee natural shade reproduction even with extremely thin layers.







## – The ultimate in Porcelain Stain Technology

Vintage Art fluorescent porcelain stains have been specially created for internal or external application to modify shades and easily reproduce individual characterizations of various types of dental ceramic. These stains are complemented with a ready to use highly fluorescent Glazing paste that supports a more life-like colour impression.

### Created for...

- Porcelain materials with different co-efficient of thermal expansion such as:  
*PFM porcelains – Vintage / Vintage Halo*  
*Alumina porcelain – Vintage AL*  
*Zirconia porcelain – Vintage ZR*
- Alumina Cores
- Zirconia Frames
- Pressable Ceramics
- CAD / CAM Ceramic Blocks



### Unique Features

#### Easy to use paste

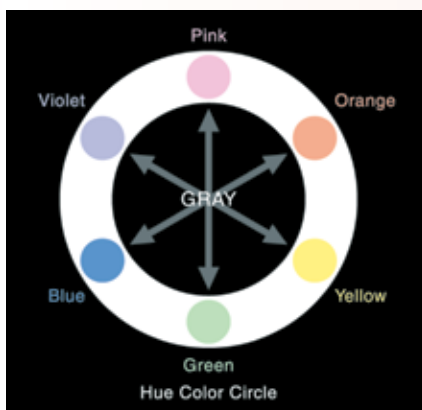
The ultra fine particle structure of the stains ensures excellent handling and efficient application in thin layers.

#### Fluorescence

These highly fluorescent stains match the fluorescence of natural dentition and enhance the vitality of the ceramic frameworks.

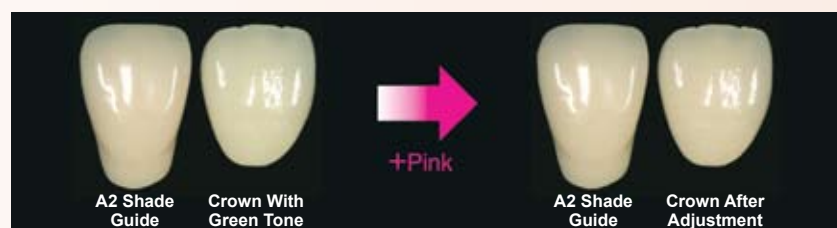
#### 32 versatile colours & shades

The Vintage Art stain concept consists of Basic stain colours, Colour stains and Shade stain colours (Shade stain and Foundation Shade stains).



Hue Colour Circle (Left)

- Colour adjustment of ceramic materials have been simplified with the subtractive color mixing theory as per the Hue Colour Circle which consists of primary stain colours (Pink [red], Blue, Yellow) secondary stain colours (Orange, Brown, Violet).
- 2 colours located opposite each other have the ability to neutralize colour and are called "Complementary Colours".



(Top) eg. If green tone should be reduced, a pink colour as the complementary colour of green can be applied to adjust the tooth shade.

## Order Information



**Vintage ZR Sets:** AB Set, CD Set, Enamel Effect Set, Margin Porcelain Set, Colour Effect Set & Whitening Set



**Vintage AL Sets:** AB Set, CD Set, Enamel Effect Set, Margin Porcelain Set, Colour Effect Set & Whitening Set



**Vintage Art Basic Set**



**Vintage Art Effect Color Set**

## Related Products



**CoreMaster Coarse HP & CoreMaster HP:** Diamond impregnated polishers for adjusting margins, shaping & finishing of Zirconia / Alumina framework.



**Porcelain Brush Set:** Selection of 6 porcelain brushes made of sable and rose wood handle.



**SHOFU INC.** 11 Kamitakamatsu-cho, Fukuine, Higashiyama-ku, Kyoto 605 - 0983, Japan ([www.shofu.co.jp](http://www.shofu.co.jp))

**SHOFU DENTAL ASIA-PACIFIC PTE. LTD.** 10 Science Park Road, #03-12 The Alpha, Science Park II, Singapore 117684 ([www.shofu.com.sg](http://www.shofu.com.sg))

**SHOFU DENTAL SUPPLIES (SHANGHAI) CO. LTD.** No.645 Jiye Road, Sheshan Industry Park Songjiang Shanghai 201602, China ([www.shofu.com.cn](http://www.shofu.com.cn))

**SHOFU DENTAL CORPORATION** 1225 Stone Drive, San Marcos, CA 92078-4059, USA ([www.shofu.com](http://www.shofu.com))

**SHOFU DENTAL GmbH** Am Brüll 17, 40878 Ratingen, Germany ([www.shofu.de](http://www.shofu.de))

**SHOFU UK.** Riverside House, River Lawn Road, Tonbridge, Kent TN9 1EP, United Kingdom ([www.shofu.co.uk](http://www.shofu.co.uk))

SHOFU is a registered trademark of SHOFU INC. All other trademarks and registered trademarks are the property of their respective holders. SHOFU INC. reserves the right to change specifications without notice.  
© Copyright 2001 SHOFU INC. All rights reserved.